

PROTEOMETER-L KIT



NOVILYTIC
THE CANARY IN THE FERMENTOR

AT-LINE TITER + AGGREGATE

The Proteometer-L analyzes titer and relative aggregate content in clarified fermentation broth in under 10 minutes.

The kit is a strategic complement to HPLCs.

It allows scientists in R&D, clone selection, or manufacturing, to better utilize their time by rapidly identifying the molecules capable of making it to the next phase of drug development, increasing efficiency.



Brief Instructional Video



PROTEOMETER-L WORKFLOW



Sample Collection

Collect and clarify fermentation broth sample



Plug & Play Analysis

Attach the Proteometer to your instrument and run samples



Rapid Results + Accelerated Development

10 minute LC fluorescence of titer and relative aggregate content

Visit novilytic.com/shop to purchase a kit.

PRICING



Price:

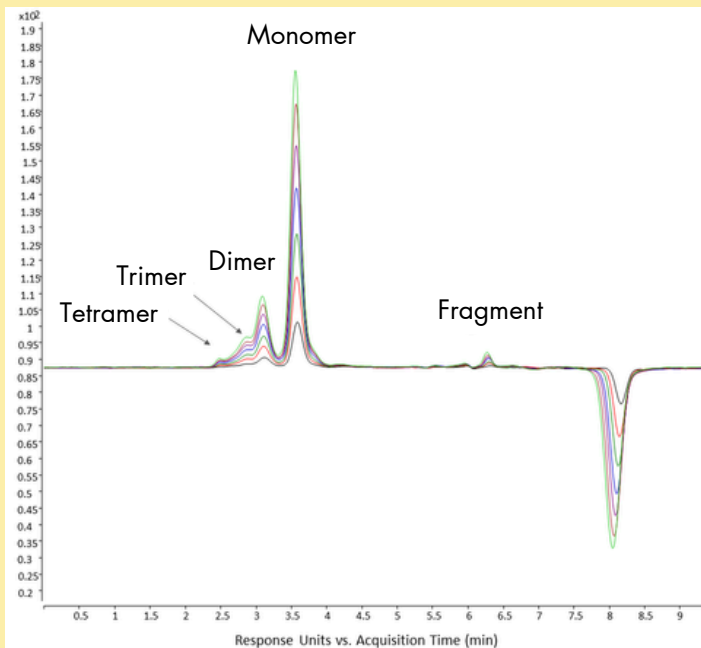
- Proteometer-L Starter Kit: \$2,995
 - 200 assays
- Proteometer-L Kit: \$4,250
 - 1,000 assays

Kit components:

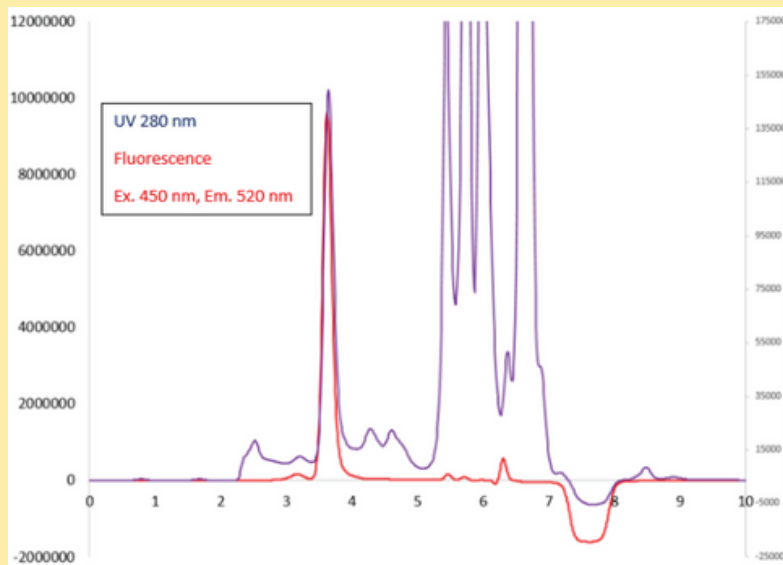
- Reconstitution Reagent
- Reactor
- Reagent
- Buffer

DATA

Titer Determination of bsAb-1 Lead Clone Multiple Injections 1 mg/mL - 6.8 mg/mL



Comparison of UV and FLR chromatograms of NIST mAb in Clarified Fermentation Broth



TESTIMONIAL

"We use the Proteometer-L Kit for the rapid analysis of mAbs for titer and aggregate content from cell-free filtrate samples. It eliminates sample preparation steps, Protein A purification, and mass spectrometry analysis steps.

I would recommend the Proteometer to any pharmaceutical company to quickly and accurately quantitate mAb titer and aggregate content."

Harsha Gunawardena

Principal Scientist, Janssen Pharmaceuticals (Johnson & Johnson's research division)

Visit novilytic.com/shop to purchase a kit.